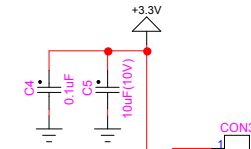


**Armadillo-440**  
CON11 (LCD I/F)

**XF2M-5015-1A**

1	VIN0
2	VIN1
3	VIN2
4	+3.3V
5	+3.3V
6	GND0
7	GND1
8	LCD_ILSCLK
9	LCD_HSYN
10	LCD_VSYN
11	LCD_OE_ACD
12	PWM01
13	LCD_LD0
14	LCD_LD1
15	LCD_LD2
16	LCD_LD3
17	LCD_LD4
18	LCD_LD5
19	GND2
20	LCD_LD6
21	LCD_LD7
22	LCD_LD8
23	LCD_LD9
24	LCD_LD10
25	LCD_LD11
26	GND3
27	LCD_LD12
28	LCD_LD13
29	LCD_LD14
30	LCD_LD15
31	LCD_LD16
32	LCD_LD17
33	GND4
34	TOUCH_XP
35	TOUCH_XN
36	TOUCH_YP
37	TOUCH_YN
38	GND5
39	EXT_IO24
40	EXT_IO26
41	EXT_IO28
42	EXT_IO27
43	EXT_IO29
44	EXT_IO30
45	EXT_IO31
46	EXT_IO32
47	EXT_IO33
48	EXT_IO34
49	GND6
50	GND6

XF2M-5015-1A



**FG100410DNCWBGT1**  
**DF9C-31P-1V(32)**

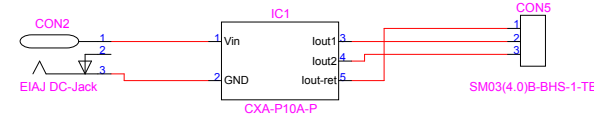
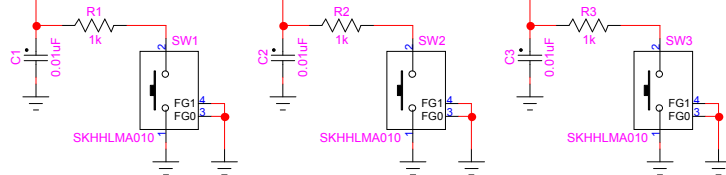
DF9-31S-1V(32)

**FG100410DNCWBGT1**  
**TouchPanel FFC**

04FMN-BMTTN-A-TF(LF)(SN)

**FG100410DNCWBGT1**  
**BHR-03VS-1 (JST)**

SM03(4.0)B-BHS-1-TB



Name : Armadillo-440  
Page : 1/1  
Title : FG100410DNCWBGT1 Interface  
Rev. : A  
Date : 2010/11/19